



www.adsdental.com

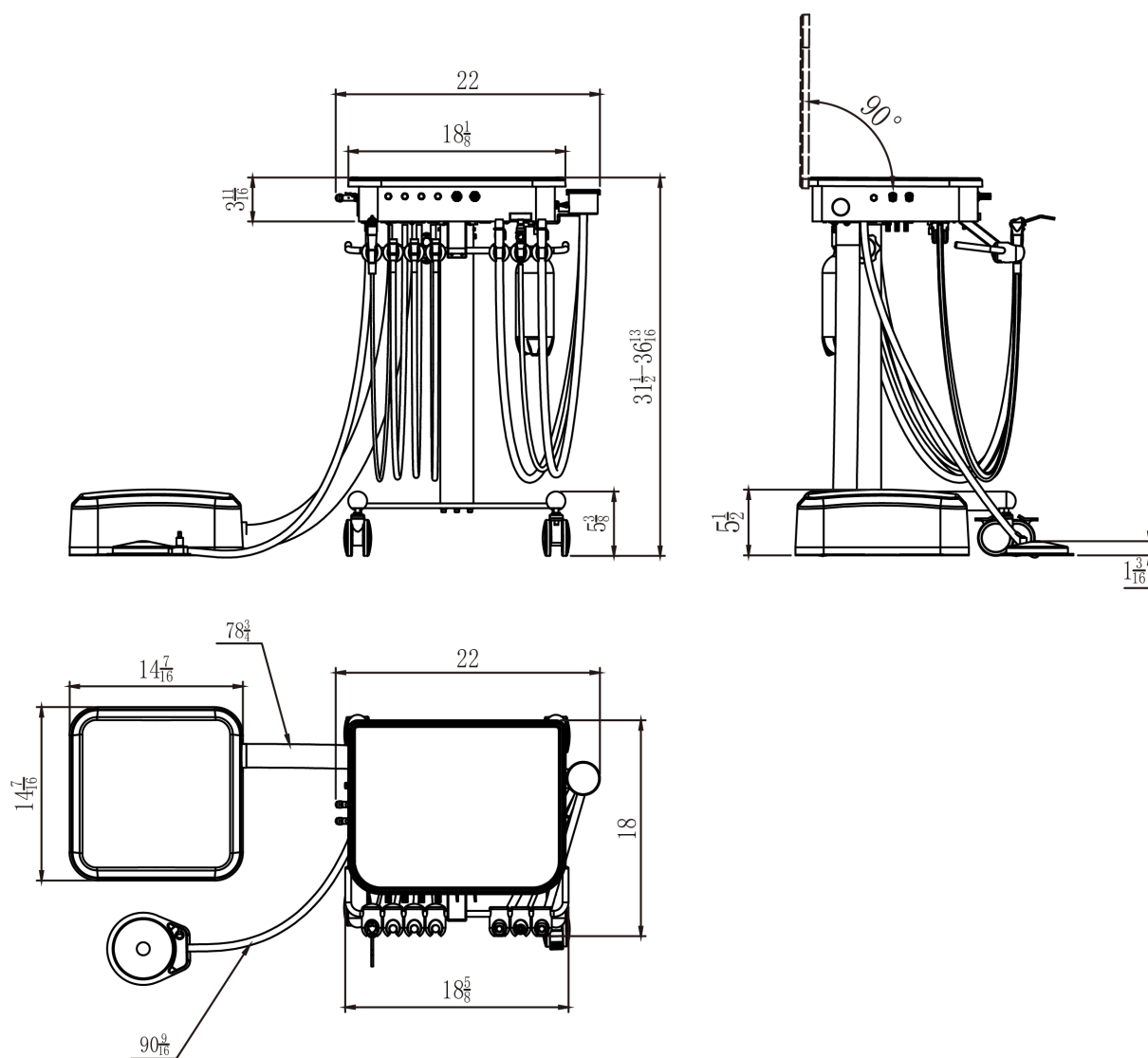
Mobile Cart User Manual

Contents

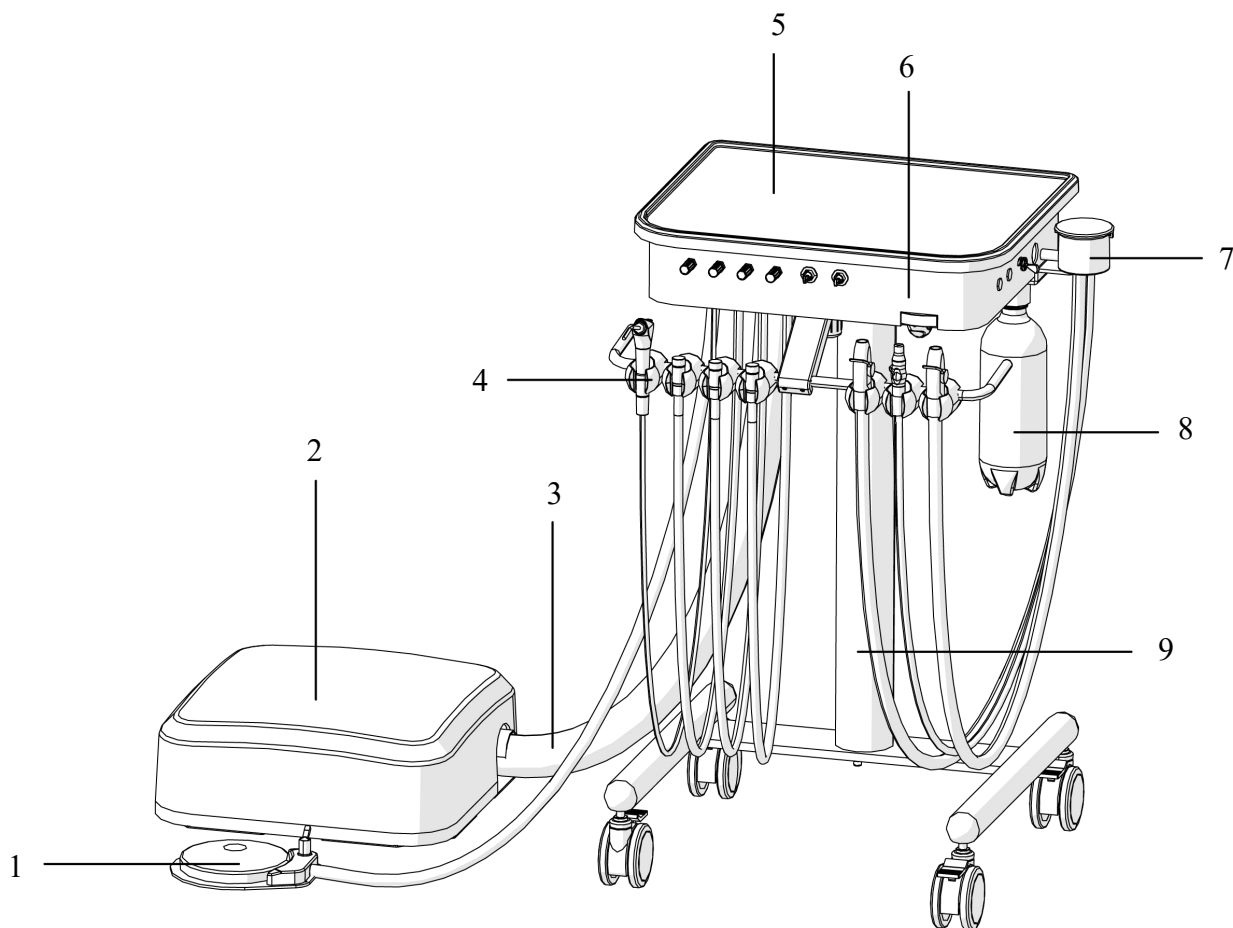
1 Dimensions.....	4
2 Compositions.....	5
3 Installation.....	6
3.1 Install the Mobile Cart.....	6
3.1.1 Install the Wheels.....	6
3.1.2 Install the Solids Collector.....	6
3.1.3 Install the Water Bottle.....	7
3.1.4 Install the External Water and Air.....	8
3.2 Switch the Instrument Holder Positions.....	9
3.3 Install the Junction Box.....	13
4 Adjustment.....	14
4.1 Handpiece Adjustment.....	14
4.2 Foot Control Adjustment.....	16
4.3 3-way Syringe Adjustment.....	17
4.4 Height Adjustment.....	17
4.5 External Water Adjustment.....	18
5 Cleaning and Disinfection.....	18
5.1 Clean the Dirty Collector.....	18
5.2 Handpiece Tubing Cleaning and Caring.....	19
5.3 Clean the Strong and Weak Suction.....	19
5.4 Maintain 3-ways syringe.....	20
Appendix.....	22

1 Dimensions

Unit:inch



2 Compositions



Item	name	Item	name
1	Foot control	6	Dentist's control head
2	Junction box	7	Solids collector
3	Convolute	8	Water bottle
4	Instrument holder	9	Support post
5	Upper cover		

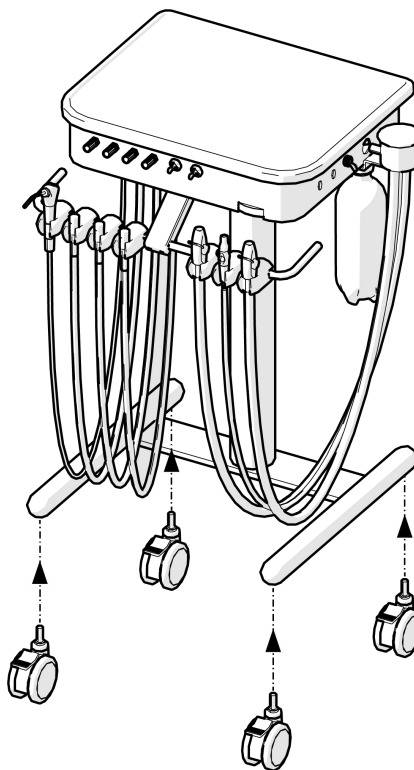
3 Installation

3.1 Install the Mobile Cart

3.1.1 Install the Wheels

To install the wheels:

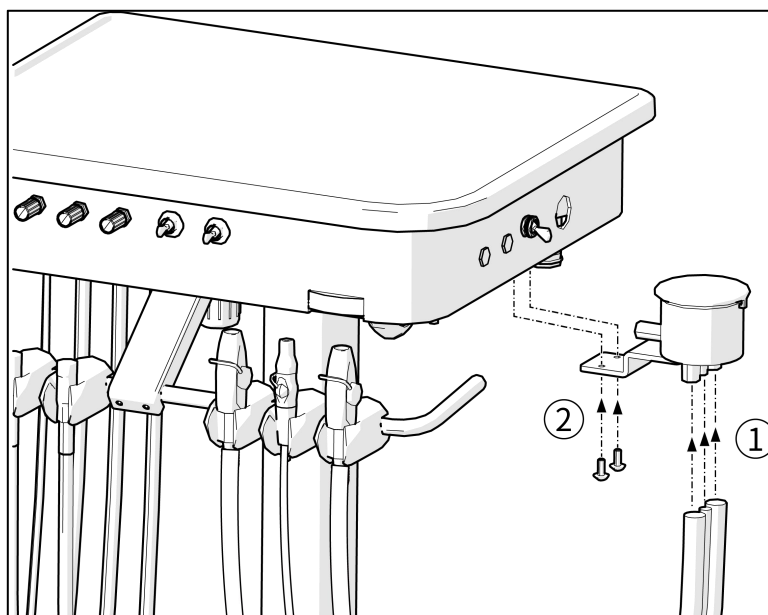
1. Insert the bolt of a wheel and tighten the wheel securely.
2. Rotate the wheel to ensure the wheel turn smoothly without looseness.
3. Fine-tune the tightness as needed.
4. Repeat steps for other wheels.



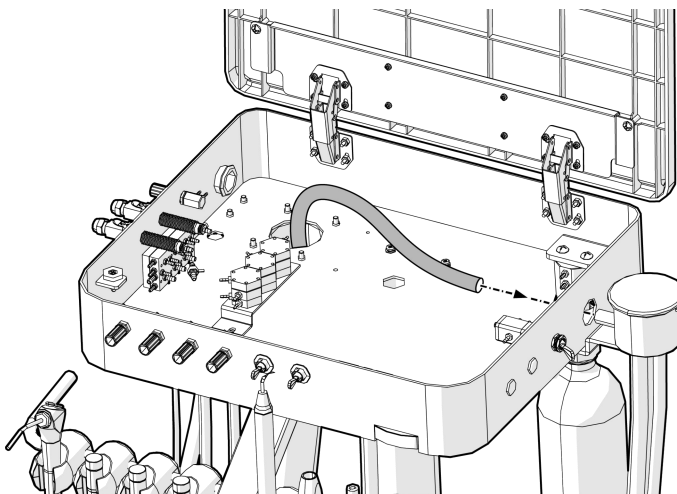
3.1.2 Install the Solids Collector

To install the solids collector:

1. Connect the drain-tube to the solids collector.
2. Install the solids collector on the mobile cart and secure it with two screws.



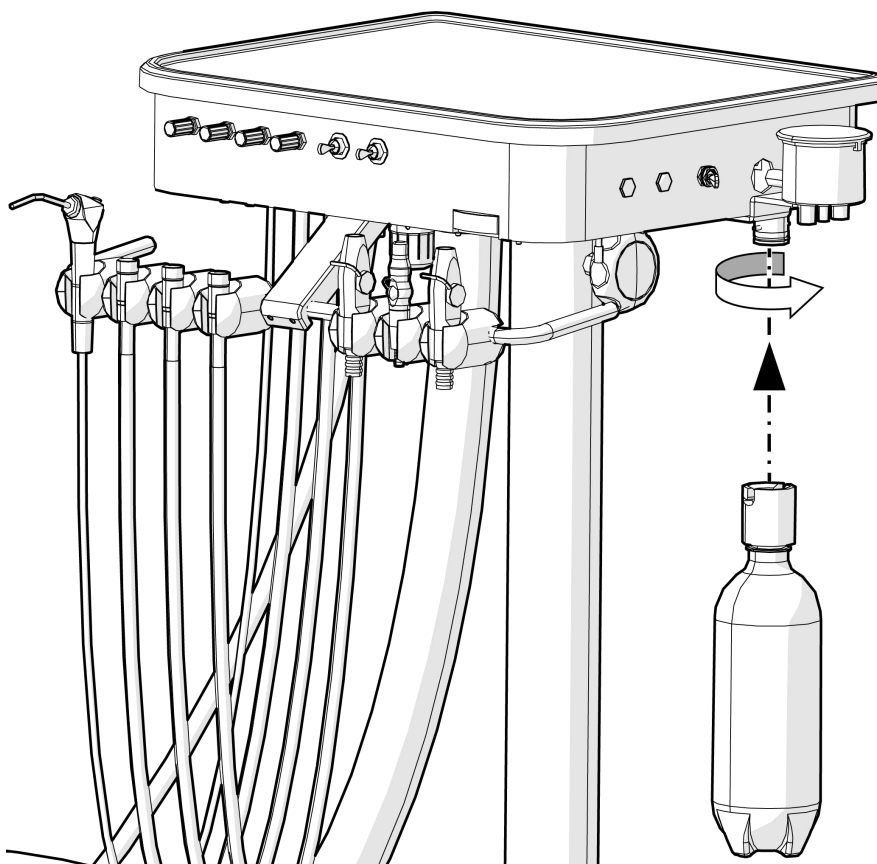
3. Open the cover of the dentist's control.
4. Connect the reserved drain-tube to the solids connector.



3.1.3 Install the Water Bottle

To install the water bottle:

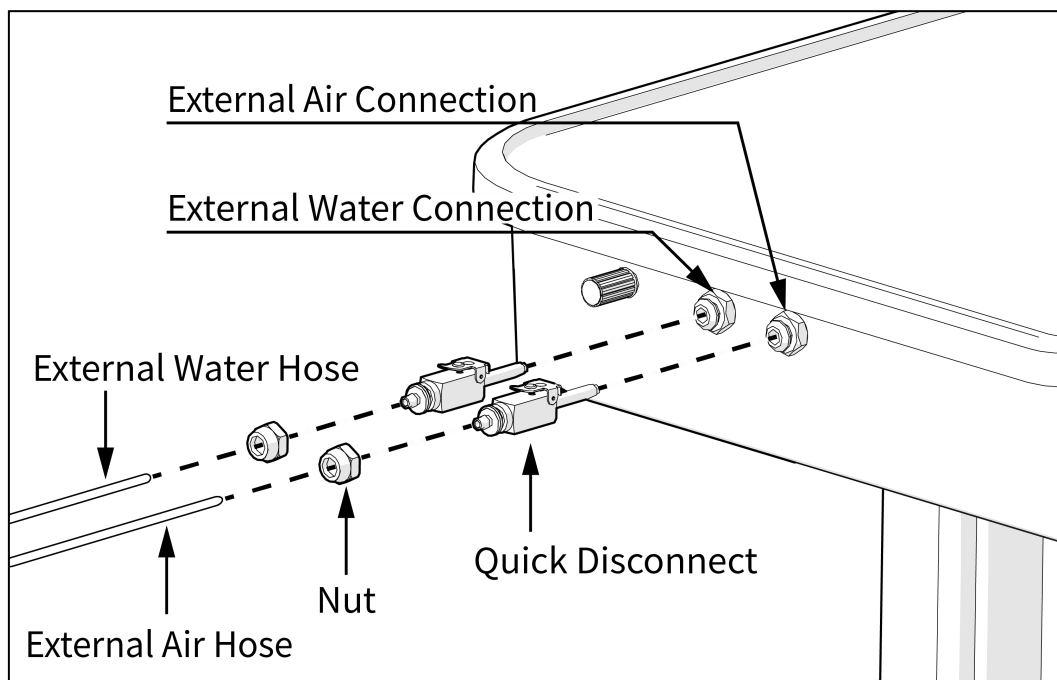
1. Align the quick-connect fitting with the outlet on the water bottle
2. Rotate the bottle counterclockwise until it locks into place.



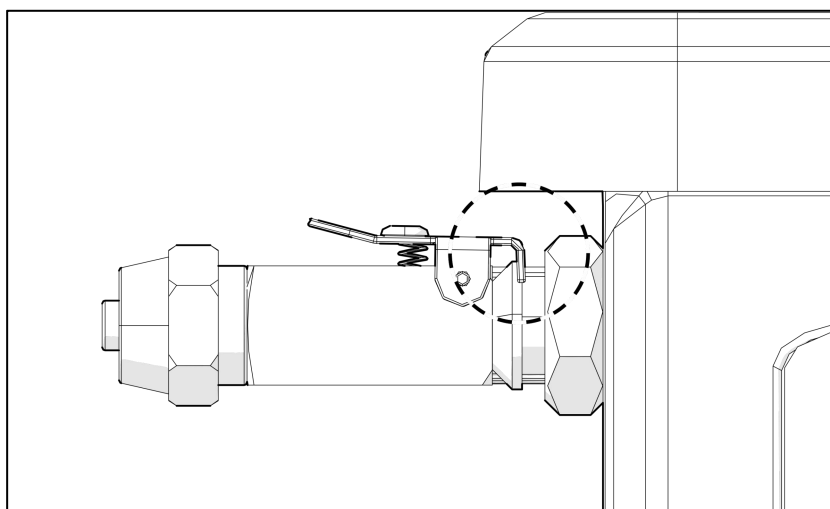
3.1.4 Install the External Water and Air

To install the external water and air installation:

1. Connect the external water hose and external air hose to the corresponding quick disconnect, and use the nut to fix it.
2. Connect the quick disconnect to corresponding connector.



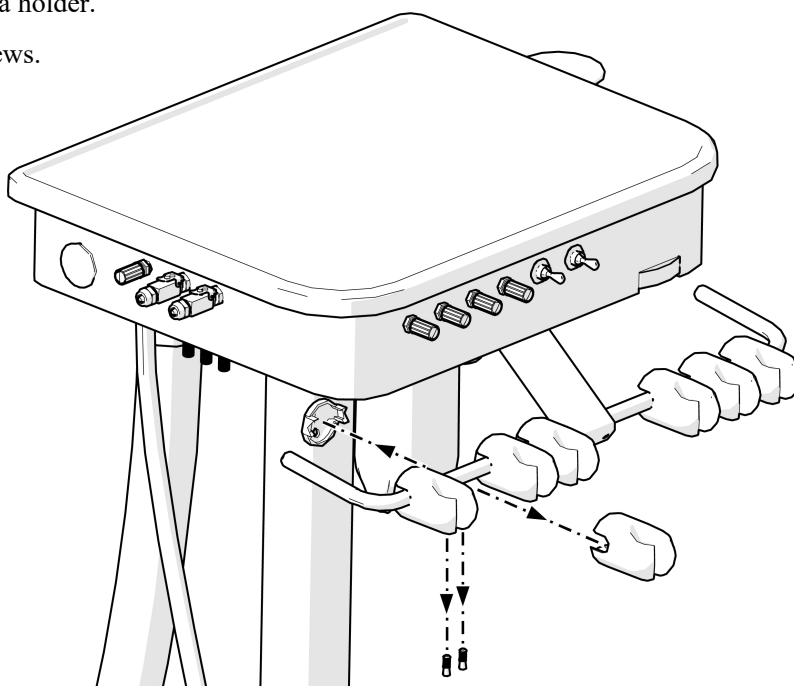
Note: The tab on the quick disconnect needs to be tightened against the connector.



3.2 Switch the Instrument Holder Positions

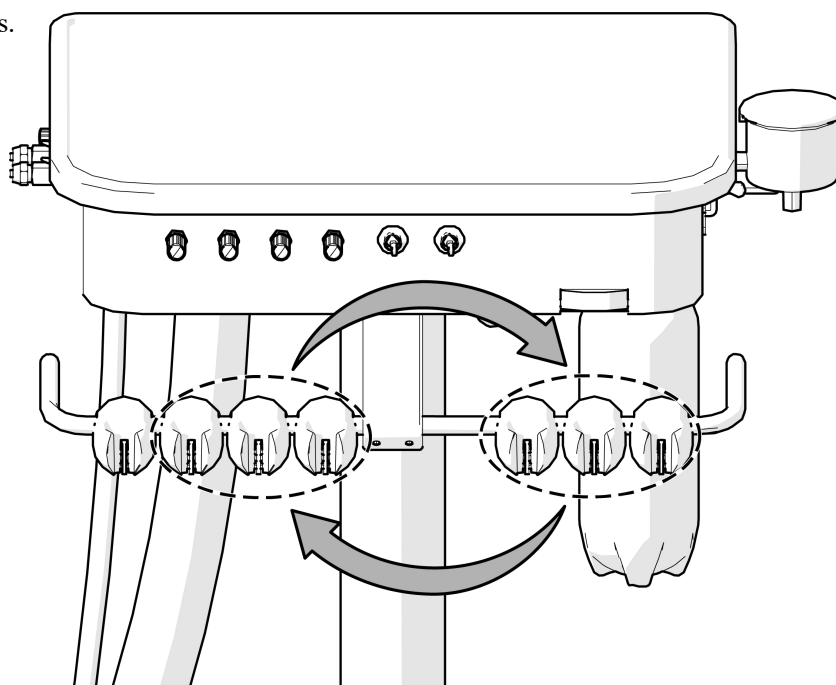
To switch the instrument holder positions:

1. Remove all the instruments from the instrument holders.
2. Uninstall each holder besides of the syringe holder.
 - ① Remove the end cap of a holder.
 - ② Uninstall the fixing screws.
 - ③ Remove the holder.

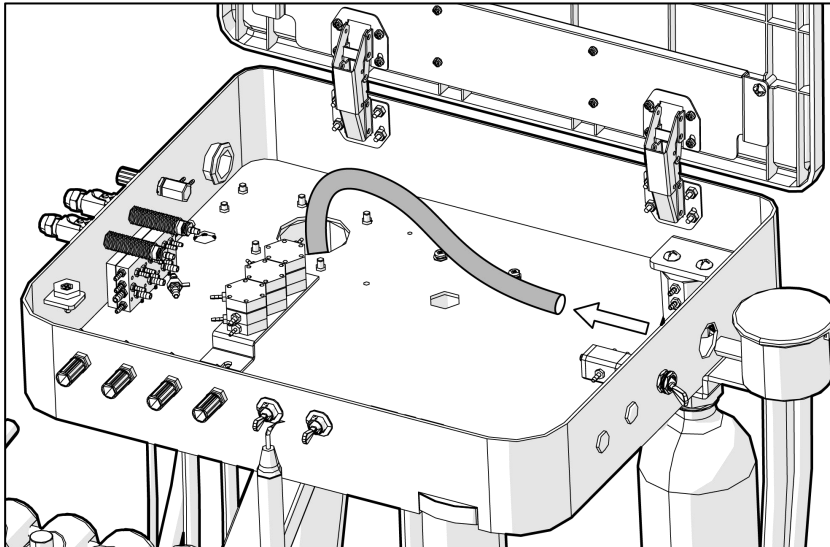


3. Install each removed holder to the new position.

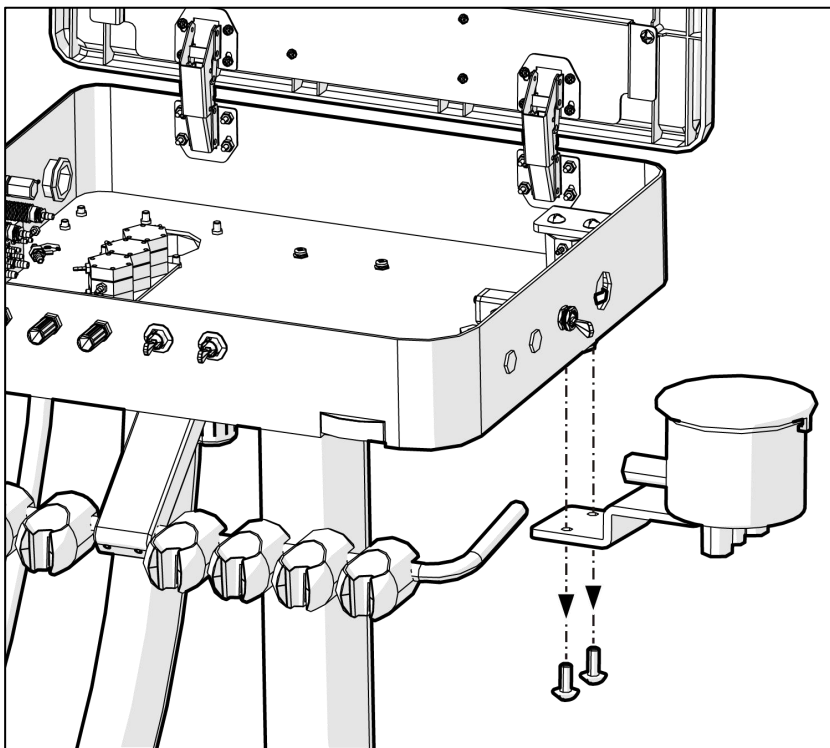
- ① Place a holder to the dentist's control.
- ② Install the fixing screws.
- ③ Install the end cap.



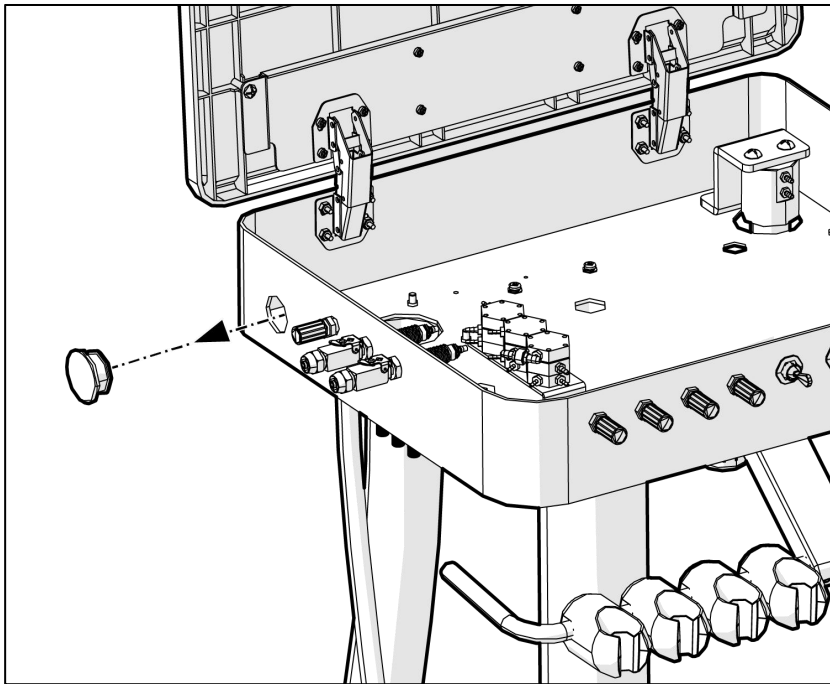
4. Open the upper cover.
5. Disconnect the drain-tube from the solids collector.



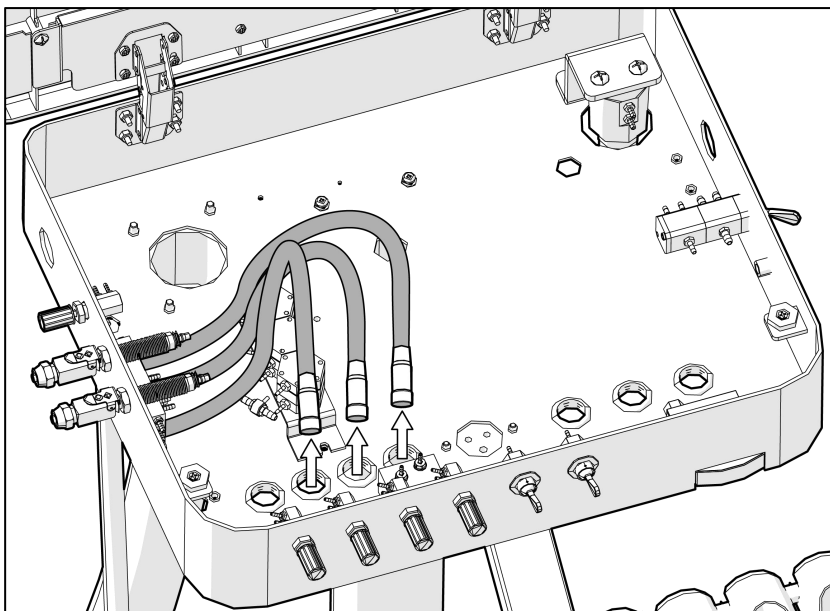
6. Uninstall the fixing screws.
7. Remove the solids collector.



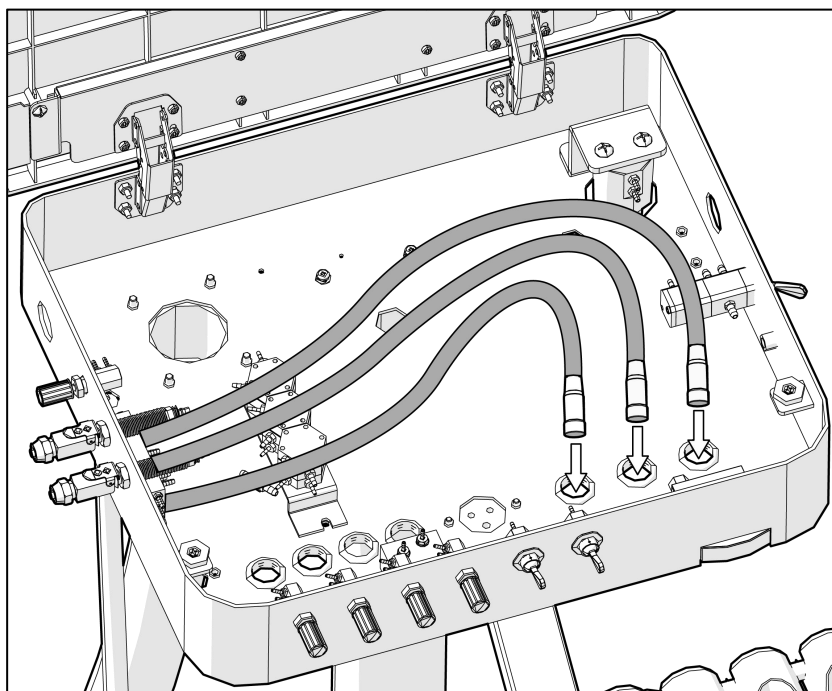
8. Remove the cap of the reserved hole.
9. Install the cap to the hole on the other side.
10. Install the solids collector to the reserved hole. For details, see the **Install the Solids Collector** section.



11. Pull out instrument tubings from inside the dentist's control head.



12. Insert the tubings into the bottom holes on the side.



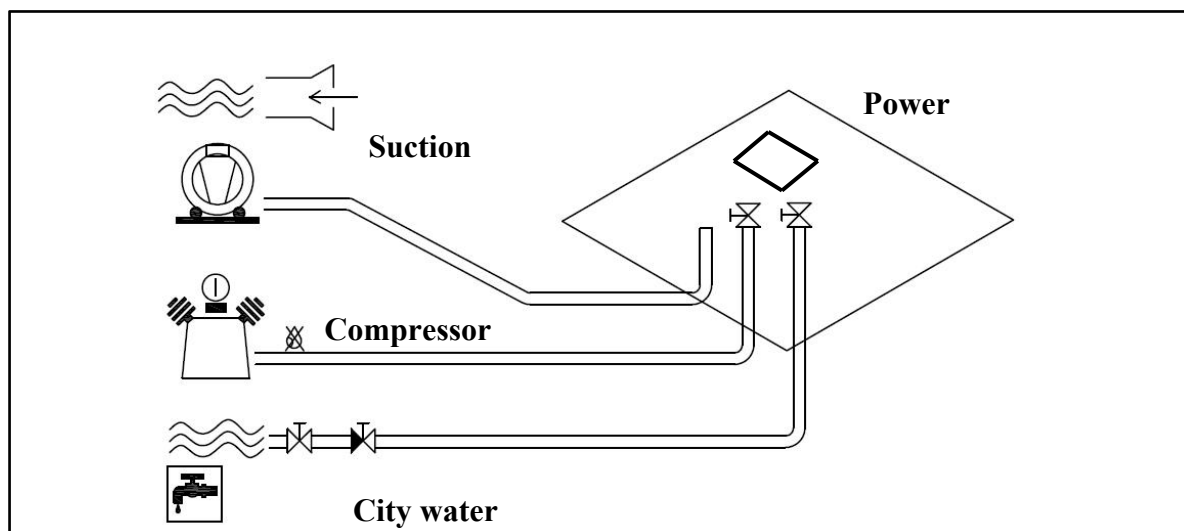
13. Connect the instruments to the corresponding instrument tubings.

14. Attach the instruments to the corresponding holders.

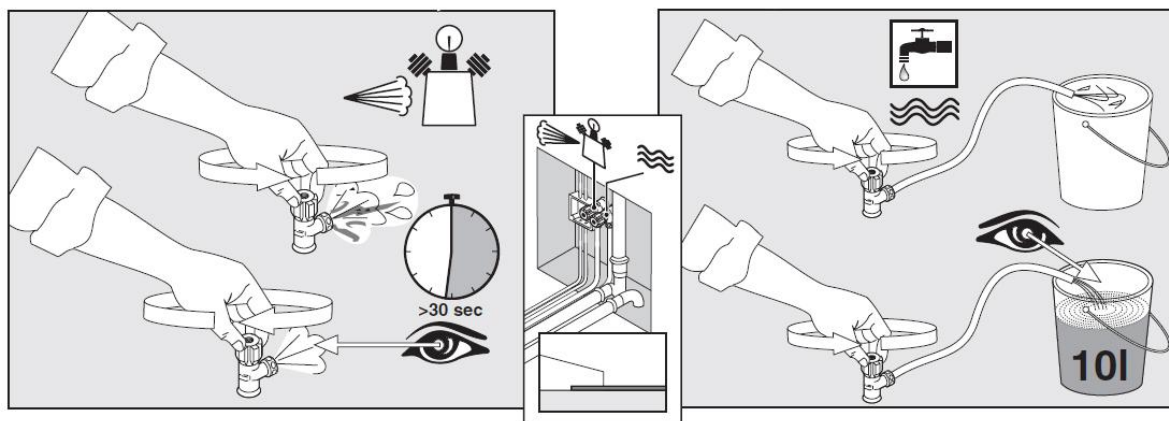
WARNING: Connect the polishing handpiece **ONLY** to the dedicated handpiece tubing (non-standard feature). Any damage caused by connecting to other handpiece tubing, such as valve clogging, is not covered under the warranty. For details of dedicated polishing handpiece tubing, contact dealers or the manufacturer.

3.3 Install the Junction Box

Connection principle of ground box tube.



Clean the tubes

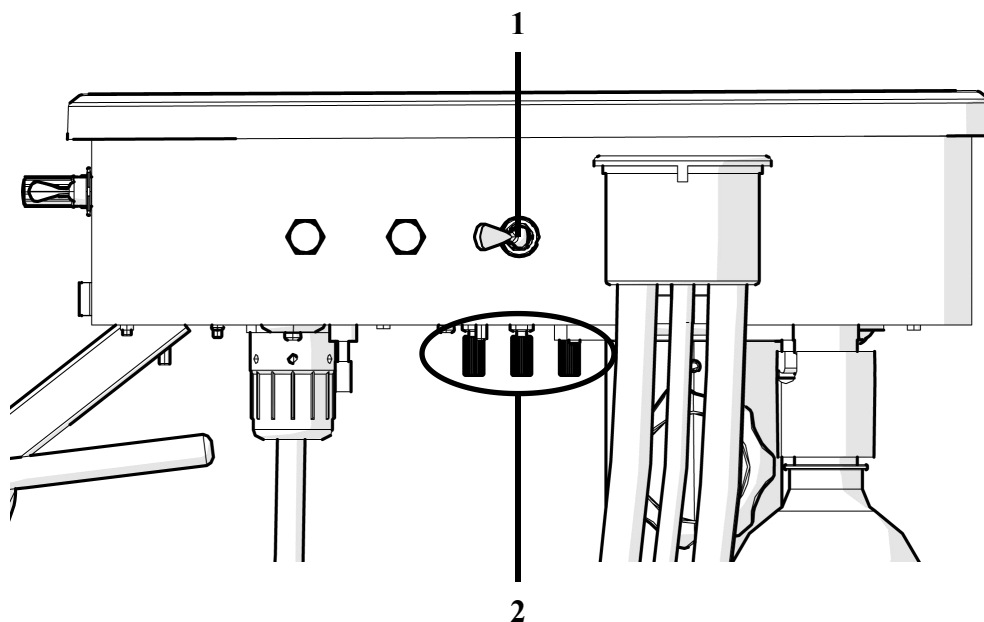


The tubes & wires are in the tubing zone or inside the junction box, the places depended on your chair configurations.

- 1、Open the valves to exhaust water and air, clean the tubes before connecting.
- 2、Open the cover of the junction box, connect the air-in, water-in, and water-out.
- 3、Take out the Power box of dental light, connect the power cord to the power box, and plug into the socket.
- 4、Close the cover.

4 Adjustment

4.1 Handpiece Adjustment

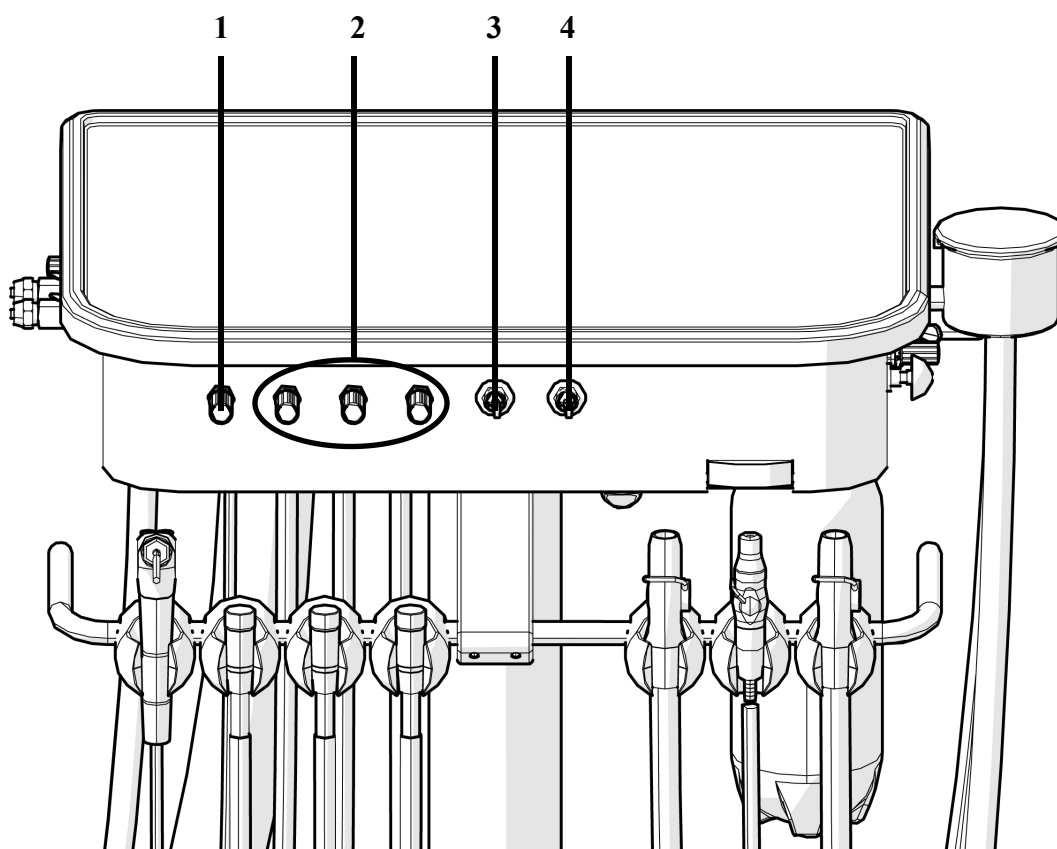


Item	name
1	Water Supply Toggle
2	Coolant Air Flow Adjustment

Coolant Air Flow Adjustment

The coolant air flow control adjusts the coolant air flow for each handpiece. Use the adjustment key to complete the adjustment.

1. Lift the handpiece from the holder.
2. Locate the air coolant control.
3. Press the foot control to activate the handpiece.
4. Adjust the coolant air flow by turning the adjustment key clockwise to decrease flow and counterclockwise to increase flow.



Item	name
1	Coolant Spray Flow Adjustment
2	Coolant Water Flow Adjustment
3	Water Flush Control Valve
4	Master ON/OFF Switch

Coolant Water Flow Adjustment

The system includes coolant water flow control for each handpiece. Use the adjustment key to complete the adjustments :

1. Lift the handpiece from the holder.
2. Locate the water coolant flow controls.
3. Turn the water on (flip the wet/dry toggle on the foot control to the right side).
4. Press the foot control to activate the handpiece.
5. Adjust the coolant water flow by turning the adjustment key clockwise to decrease flow and counterclockwise to increase flow.

4.2 Foot Control Adjustment

turn off mist spray



open mist spray



NO



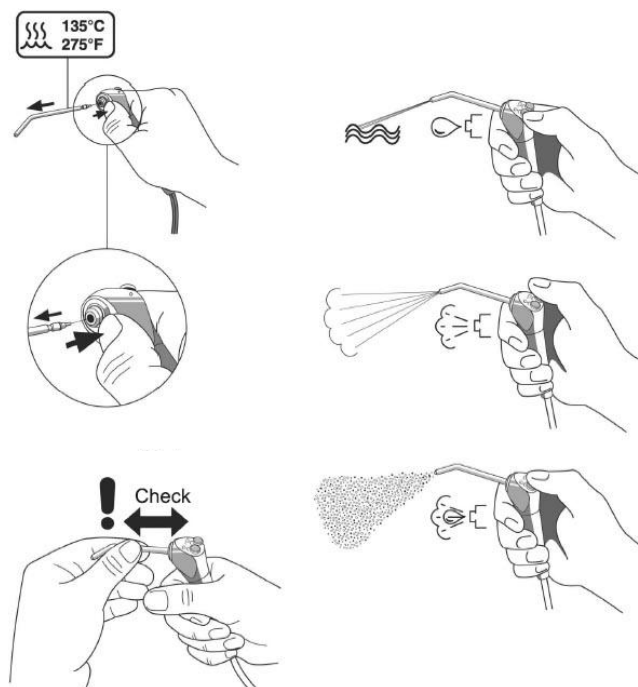
OK

Note:

Adjust the drive air pressure to meet the handpiece manufacturer's drive air pressure specification.

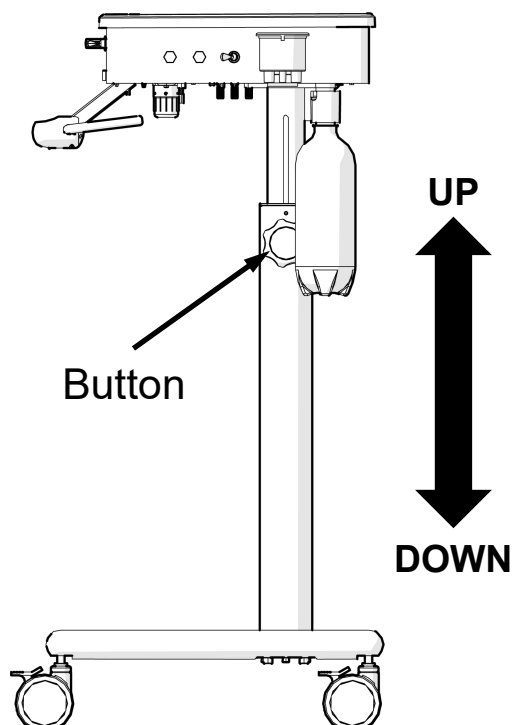
Refer to your handpiece documentation for the drive air pressure specification.

4.3 3-way Syringe Adjustment



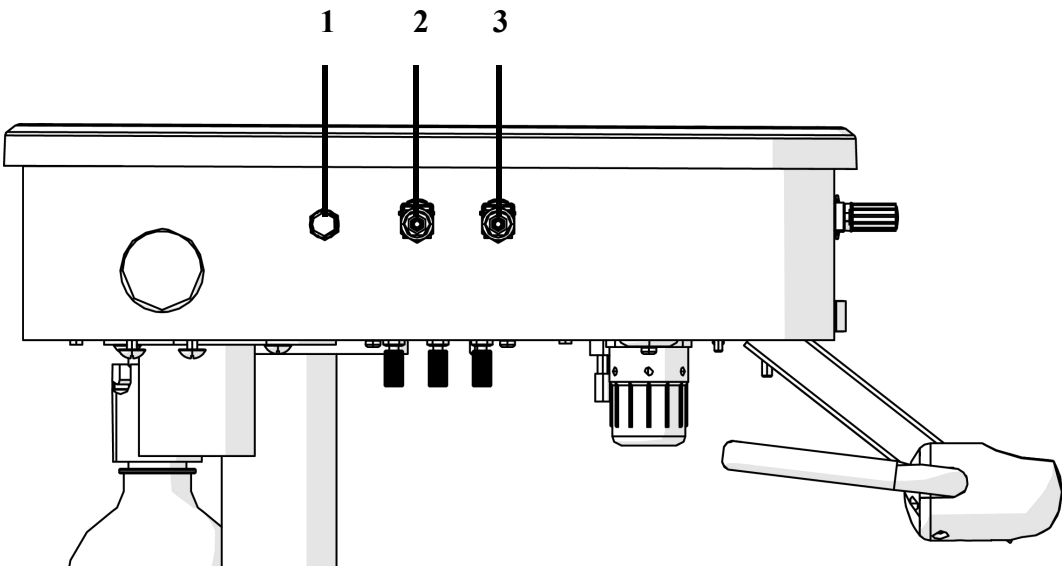
4.4 Height Adjustment

Loose or tight the button to adjust the height of dentist's control head.



4.5 External Water Adjustment

The external water flow could be adjusted by rotating external water flow adjustment control valve.



Item	name
1	External Water Flow Adjustment
2	Water Supply Inlet
3	Air Supply Inlet

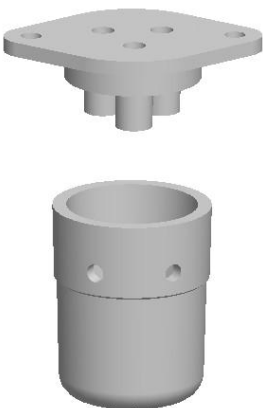
5 Cleaning and Disinfection

5.1 Clean the Dirty Collector

Keep weekly maintenance. Increase maintenance times with frequent use,

ways for maintenance as below:

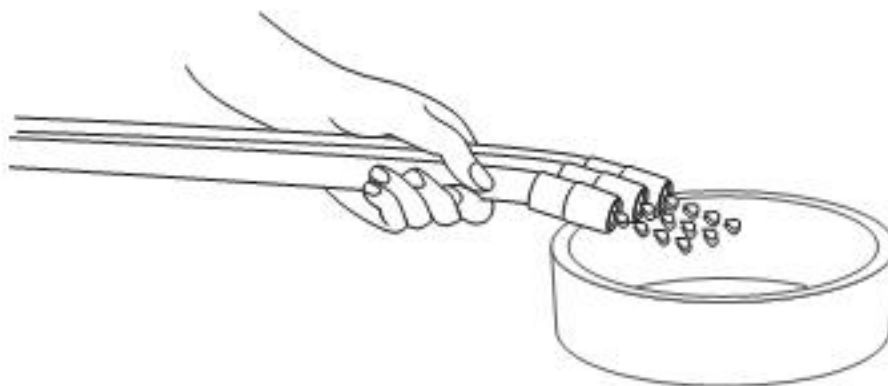
1. Unscrew the dirty collector counterclockwise and remove it.
2. Discard used cotton.
3. Put some cotton into dirty collector.
4. Tighten the dirty collector clockwise.



5.2 Handpiece Tubing Cleaning and Caring

Flush Tubings independently or together

- Use the handpiece tubing flush system to move more water through the tubing's in less time than using the foot control. After each patient:
- 1. Disconnect the handpieces before flushing the tubings.
- 2. Gather handpiece tubings that use Flush and hold them over a sink, cuspidor bowl, or basin.
- 3. Hold the tubings so that the water is directed away from you and into the receptacle (see the Figure 38.)
- 4. It last for 20~30s.



Notice: Discharge all tubing air and water lines for 20–30 seconds between each patient.

5.3 Clean the Strong and Weak Suction

Suction cleaning suggestion:

- Suck 2 cups of water in every two hours during working time;
- Suck 1 liter water after daily working.

5.4 Maintain 3-ways syringe

To ensure the proper functioning and longevity of the 3-ways syringe, regular maintenance is necessary.

Maintenance Frequency: at least once a month.

Daily Usage Precautions:

- Before each use, perform a preliminary operation check away from the patient's mouth. If you notice any looseness, vibration, air leaks, or water leaks, stop using the device immediately and have it serviced by a professional from your dealer.
- Do not clean the tip or other components of the syringe with hydrogen peroxide or disinfectants, as this can cause corrosion of the parts.
- If air, water, or spray functions malfunction, stop using the device immediately and contact your dealer.

Warning!

- Do not use a deformed syringe tip! There is a risk of danger and damage to the product!
- Any form of dropping or impact can cause damage to the syringe. Avoid dropping or impacting the syringe!

Procedure

1. Turn off the air supply and water supply from the dental unit.
2. Use an M4 hex wrench to uninstall the tip locking retainer.
3. Remove remaining components, such as the O-ring and spring, in sequence.



Figure 1 Angled Syringe Tip Locking Retainer Uninstallation



Figure 2 Straight Syringe Tip Locking Retainer Uninstallation

4. Push out the button retention pin. Figure 3 shows an example on the angled syringe.
5. Remove buttons and other components, such as the O-ring and spring, in sequence.

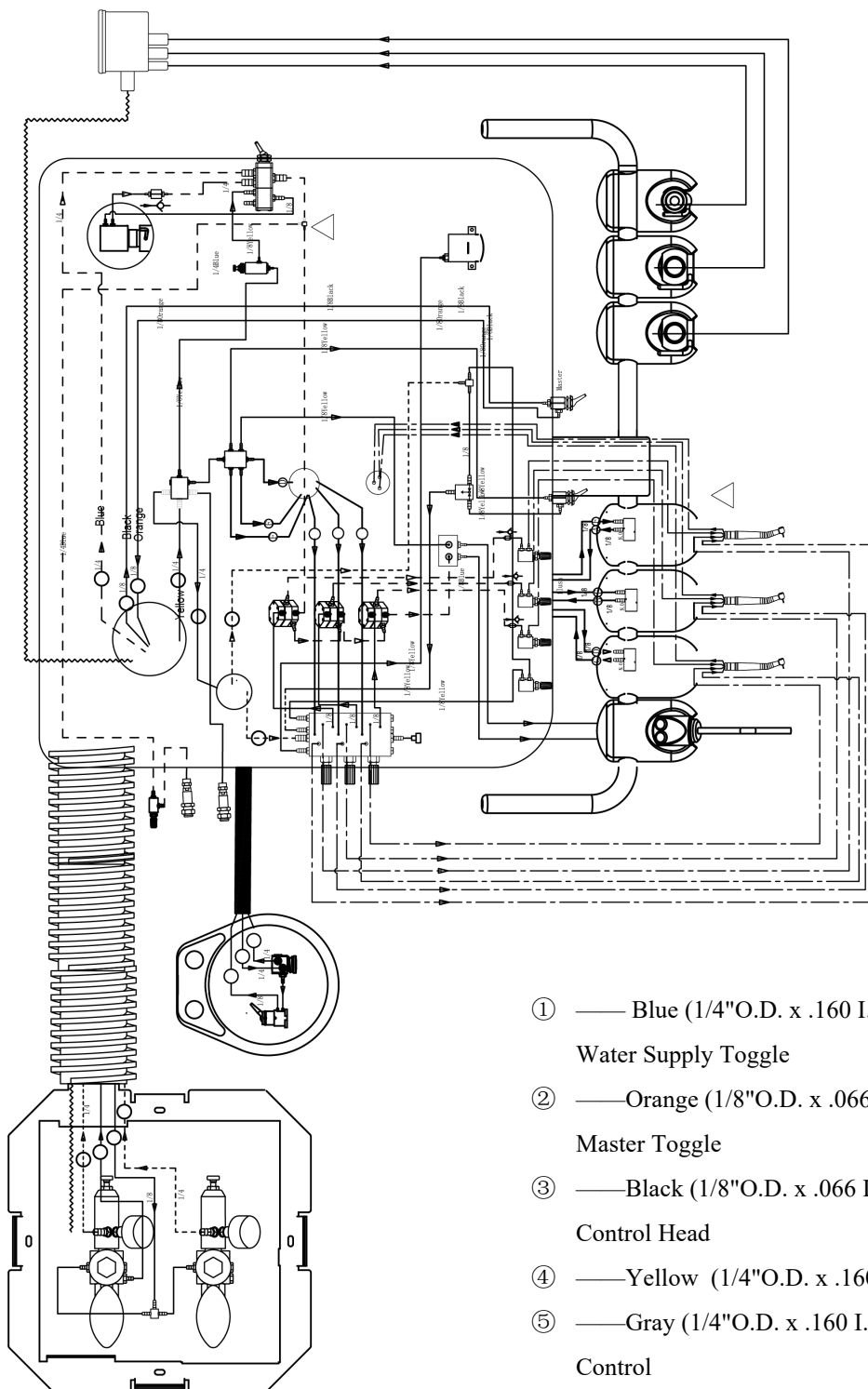


Figure 3 Syringe Button Uninstallation

6. Rinse the syringe components with water, which is to prevent blockages in the tubing, connectors, and seals.
7. Reinstall the components in reverse order.

Appendix

Water and Air Supply Diagram



- ① — Blue (1/4"O.D. x .160 I.D.) City water to Water Supply Toggle
- ② — Orange (1/8"O.D. x .066 I.D.) Pilot Air from Master Toggle
- ③ — Black (1/8"O.D. x .066 I.D.) Master Air to Control Head
- ④ — Yellow (1/4"O.D. x .160 I.D.) Pilot Air
- ⑤ — Gray (1/4"O.D. x .160 I.D.) Master Air to Foot Control
- ⑥ — Gray (1/8"O.D. x .066 I.D.) Pilot Air from Wet/Dry Toggle
- ⑦ — Gray (1/4"O.D. x .160 I.D.) Drive Air from Foot Control

We reserve the right to make any alteration which may be due to technical improvements.



ADS Dental System Inc.

Add: 1590 S Milliken Ave., unit A, Ontario, CA 91761
Tel: (626) 620 0456
E-mail: ads@adsdental.com
www.adsdental.com