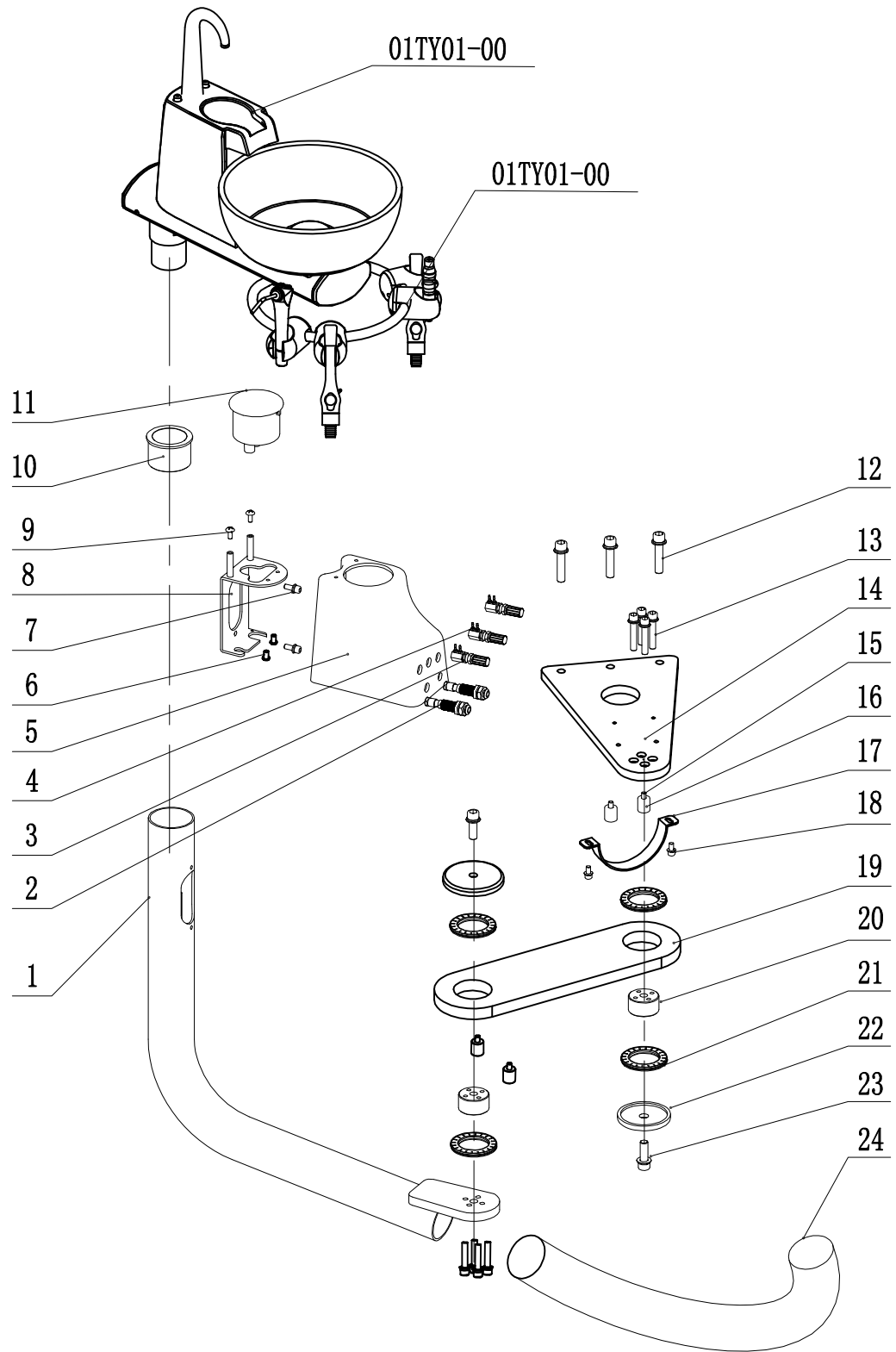


# 201 rear cuspidor bom diagram12

201ZS02-00A



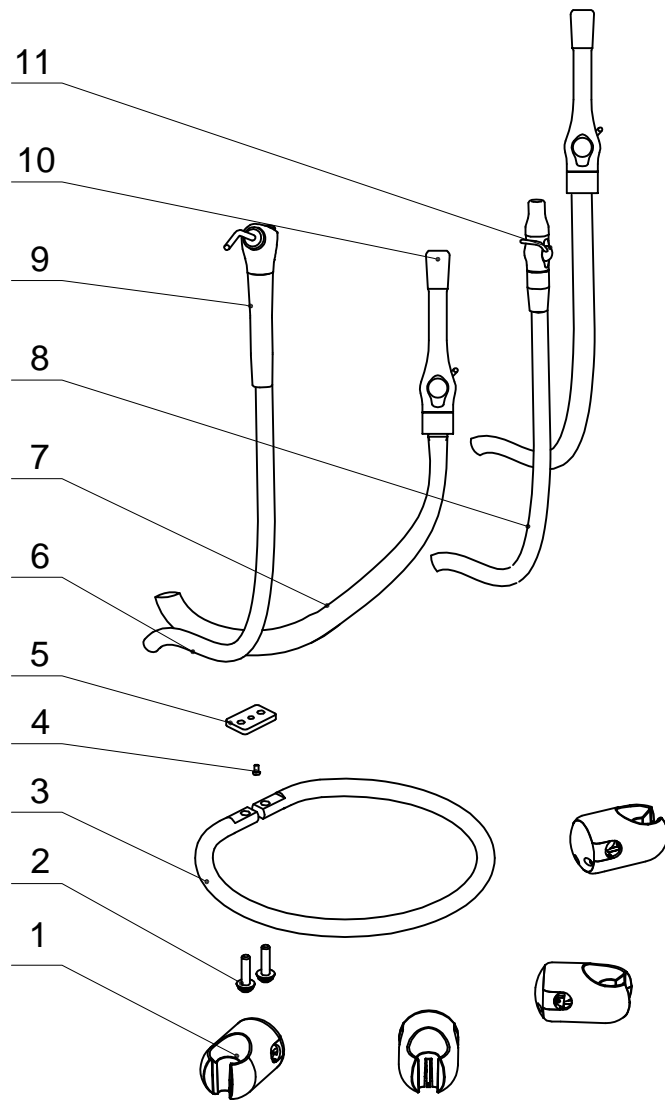
## 201 rear cuspidor bom diagram12

201ZS02-00A

No.	Part number	Name	Number	Remark
1	8026017A	rear cuspidor assistant arm	1	
2	8011584A	1/4 inch pipe quick connector	2	
3	8018127A	regulating valve	1	
4	8012196A	small nipple water regulating valve (φ2.4-φ2.4)	2	
5	8026035A	external water-air bracket shell	1	
6	8019912A	6#-32*3/8 Stainless steel screw	2	
7	8016660A	M6*20 Stainless steel screw	2	
8	8026032A	external water-air bracket shell	1	
9	8022177A	M4*12 Stainless steel screw	2	
10	8026020A	rear cuspidor arm shaft sleeve	1	
11	8017272B	filter (Large straight out)	1	
12	8001750A	M8*20 Stainless steel screw	3	
13	8018229A	M6*30 Stainless steel screw	8	
14	8026815A	12US rear fixed board	1	
15	8001738A	M6*16 Stainless steel screw	4	
16	8012721A	AJ16 front rotate arm limit sleeve	4	
17	8022426A	304 Stainless steel with glue hoop	1	
18	8009403A	M5*10 Stainless steel screw	2	
19	8026053A	rear cuspidor connection board	1	
20	8011842A	Φ50 down connection shaft	2	
21	8011830A	AXK5070 surface bearing	4	
22	8011842A	φ50 connection shaft cover	2	
23	8021163A	M10*30 Stainless steel screw	4	
24	8025891A	Φ52X45 grey corrugated pipe (length 80CM)	1	

# Fear assistant hanger bom diagram

201ZS01-01A-201



No.	Part number	Name	Number	Remark
1	JS00611	circle assistant shell (without valve)	4	
2	8026071A	M6*20 Stainless steel screw	2	
3	8026056A	handle rod(11)	1	
4	8001678A	M4*8 Stainless steel screw	1	
5	8026059A	handle rod fixed block	1	
6	8018652A	2 holes syringe pipe	1	
7	8012853B	TDS strong suction pipe (type: 1A-016)	2	
8	8012850B	TDS weak suction pipe(type: 1A-002)	1	
9	8011428A	DCI elbow syringe	1	
10	8012856B	metal with switch long handle	2	
11	8012859C	metal with switch small handle(φ6.5)	1	