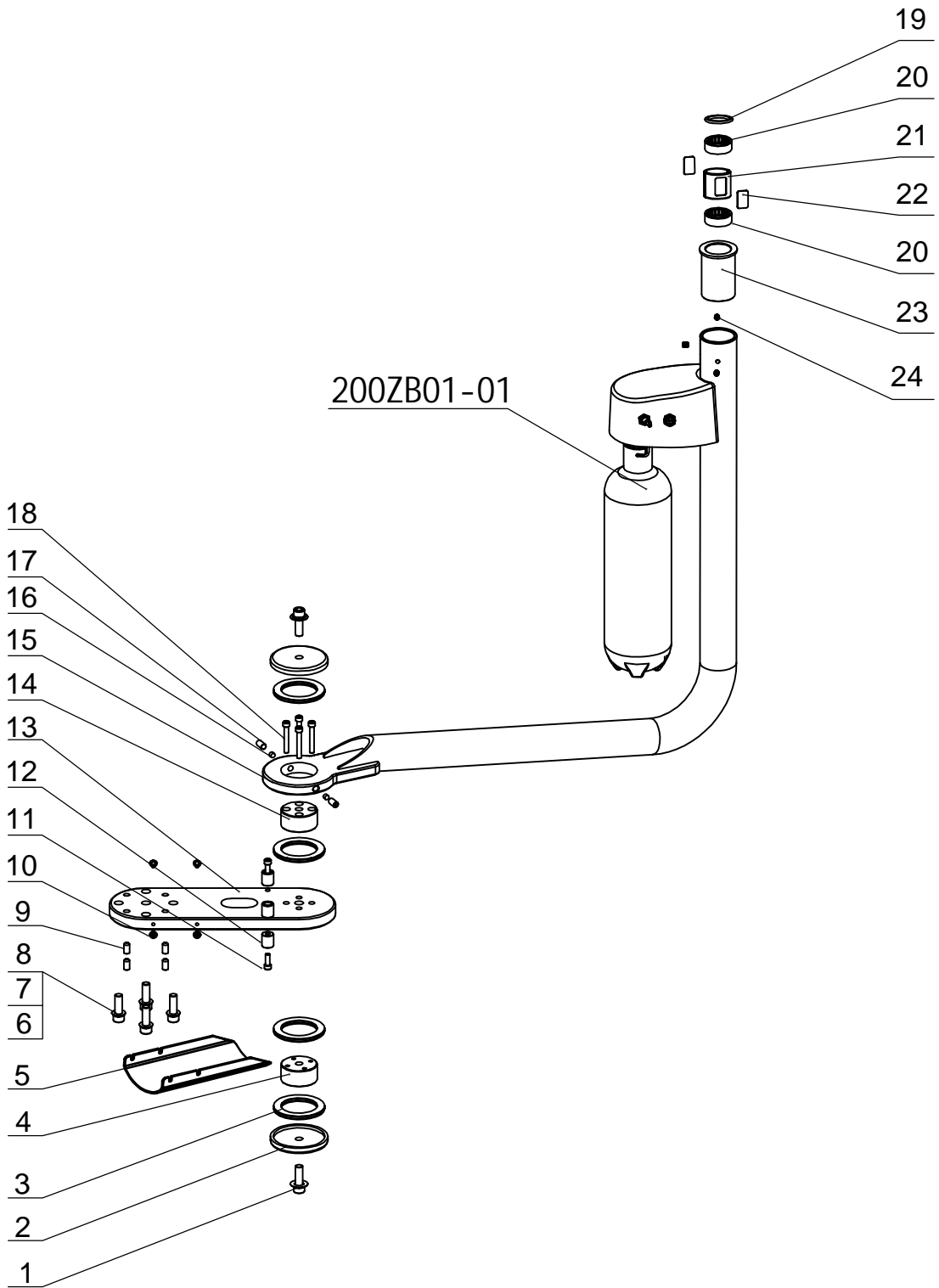


2 inches front rotate arm

200ZB01-00A



2 inches front rotate arm			200ZB01-00A	
No.	Material No.	Name	Quantity	Remark
1	8021163A	M10*30 stainless steel screw	2	
2	8011827A	φ50 connection axle cover	2	
3	8011830A	AXK5070 surface bearing	4	
4	8011842A	φ50 down connection shaft	2	
5	8012742C	AJ16 front pipeline protection cover	1	
6	8001783A	M10*40 stainless steel screw	4	
7	8001570A	φ10 spring washer	4	
8	8001597A	φ10 flat gasket	4	
9	8012727A	M10*12 set screw	4	
10	8018076A	M5*12 stainless steel screw	4	
11	8001738A	M6*16 stainless steel screw	4	
12	8012721A	AJ16 front rotate arm limit sleeve	4	
13	8011839C	AJ16 front connection board	1	
14	8011836A	φ50 upper connection shaft	1	
15	8020212E	2 inches front rotate arm	1	
16	8011443A	M8*10 set screw	4	
17	8012745A	AJ16 front rotate arm damping shaft	4	
18	8001744A	M6*50 stainless steel screw	4	
19	8012739A	AJ16 front rotate arm decoration ring(chrome plated)	1	
20	8011440A	HK3012 needle bearing (drawn cup)	2	
21	8013372A	balance arm damping sleeve	1	
22	8013288A	AJ16 rotate arm dampng tableting	2	
23	8024115A	φ45.7转1又8分3衬套	1	
24	8013801A	M6*8 set bolt	3	