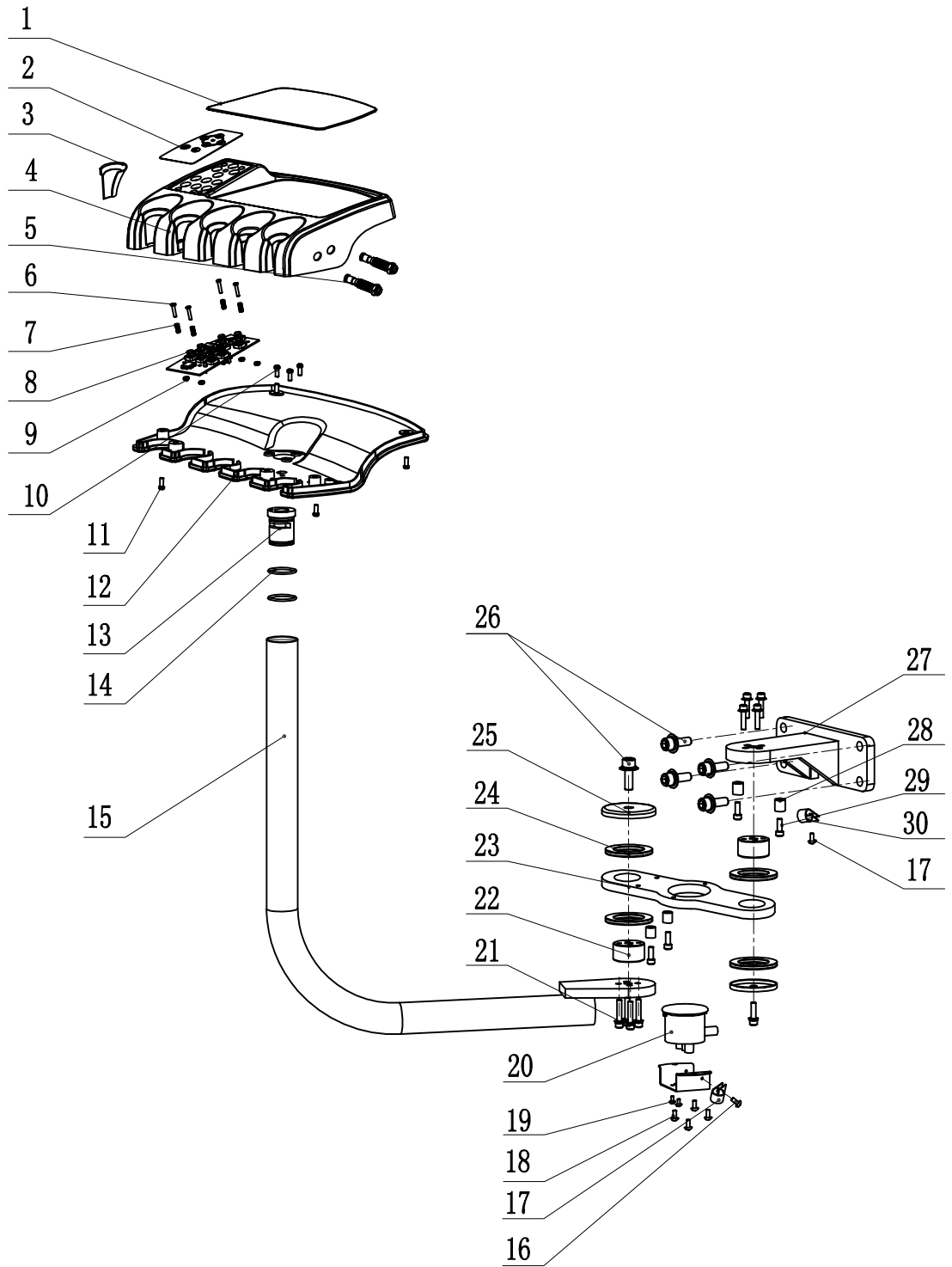


# AS-7 Hanger Assembly 400

07ZS02-00A



## AS-7 Hanger Assembly 400

07ZS02-00A

No.	Material No.	Name	Quantity	Remark
1	8013966B	Ajax Silicon Mat of Assistant Instrument	1	
2	8022240A	AS-1 Sub-key Board (ADS)	1	
3	8020911A	Handle Reducing Sleeve	1	
4	8013516B	Ajax Upper Cover of Assistant Instrument	1	
5	8011584A	1/4 Inch Hose Connector	2	
6	8001636A	M3*16 Stainless Steel Counter sunk Head Philips Screw	4	
7	8001546A	Spring of Keypad	4	
8	8015481A	Ajax Key Board Plate of Assistant Instrument	1	
9	8001609A	M3 Stainless Steel Nut	4	
10	8018235A	M4*10 Stainless Steel Pan Head Philips SEM Screw	3	
11	8001678A	M4*8 Stainless Steel Truss Head Philips Screw	4	
12	8013519C	Ajax Bottom Cover of Assistant Instrument	1	
13	8015238C	AJ16 Rotating Base	1	
14	8013975A	φ22 x φ2.65 O Ring	2	
15	8011866F	AJ16 Rear-mounted Assistant Arm	1	
16	8016762A	M4*6 Stainless Steel Truss Head Philips Screw	1	
17	8019180A	R Linear Buckle AD34.5	1	
18	8019912A	6#-32*3/8 Stainless Steel Round Head Screw	4	
19	8015988A	M5*8 Stainless Steel Truss Head Philips Screw	2	
20	8019033A	Filter	1	
21	8018229A	M6*30 Stainless Steel Socket Head SEM Screw	8	
22	8011863A	φ40 Connecting Shaft	2	
23	8019027B	AJ16 Connecting Plate II of Rear-mounted Assistant Arm	1	
24	8012163A	AXK4060 Bearing	4	
25	8011872B	φ40 Connecting Shaft Cap	2	
26	8021163A	M10*30 Stainless Steel Socket Head SEM Screw	6	
27	8019024C	AJ16 Rear-mounted Assistant Arm Holder II	1	
28	8012721A	AJ16 Limit Sleeve of Post Mounted Rotating Arm	4	
29	8001738A	M6*16 Stainless Steel Socket Head Screw	4	
30	8019039A	R Linear Buckle AD18.5	1	